



COMPANY OVERVIEW

We were incorporated in 2020 in New Jersey as an LLC. **Patriot is an SDVOB and SBE in NJ, NY, and Federally.** We are a specialty union subcontractor mainly serving heavy highway with shotcrete, gunite, demo, general labor, and civil work. We serve the Eastern United States and the USVI.

DUNS#

★ **117222897**

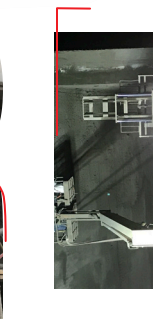
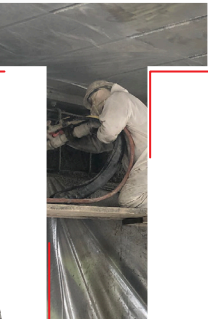
CAGE

★ **8FJ84**



CORE COMPETENCIES

CONCRETE REPAIR / SHOTCRETE / ONE SIDED STRUCTURAL WALLS



Shotcrete • General Labor • Demolition • Civil Work



MANAGEMENT PROFILES

Frank Townsend,

DISABLED VETERAN
OWNED BUSINESS

Visit Our Website

- ★ Frank Townsend, has a master's degree and served as an Army Engineer Officer for 8.5 years.
- ★ Frank serves on the board of the ASA (past president) and the ACI (Committee Chair C660). Frank is a member of the Moles and Beavers (Heavy Construction Organizations), NJ ACI, NY CIB as well as others

WWW.patriotshotcrete.com

9 Veronica Ave,
Somerset, NJ 08873

frank@patriotshotcrete.com 201-630-0630

PROJECT EXPERIENCE / REFERENCES

01 Beaver Concrete Construction Co,
bridge repairs,
Justin Marsh

02 Walsh Construction,
tunnel lining,
James Grillo

03 George Harms,
retaining walls/abutments,
Jeff Brantly

04 Commodore Construction,
building retrofit,
Mike Kennedy

05 Skanska/Walsh,
Laguardia airport flood walls,
Pasquale Romanella

BONDABLE